

# State of Wyoming Corner Record

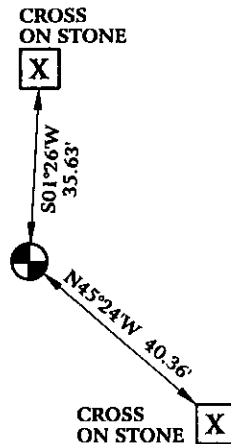
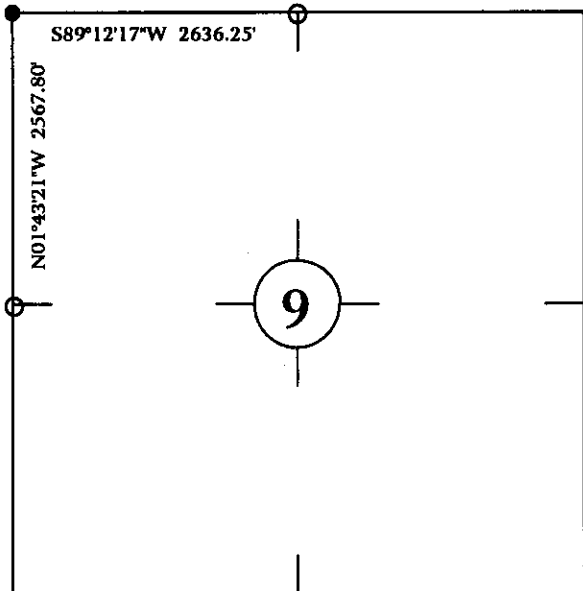
(In compliance with the CORNER PERPETUATION AND FILING ACT, Wyoming Statutes, 1997 Section 33-29-140 et. seq., and the Rules and Regulations of the Board of Professional Engineers and Professional Land Surveyors)

Reverse side of this form may be used if more space is needed.

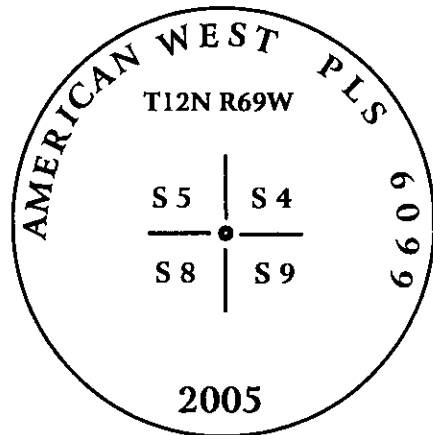
Record of original survey and citation of source of historical information (if corner is lost or obliterated). Description of corner monumentation evidence found and/or monument and accessories established to perpetuate the location of this corner. Sketch of relative location of monument, accessories, and reference points with course and distance to adjacent corner(s) (if determined in this survey). Method and rationale for reestablishment of lost or obliterated corner.

ORIGINAL CALL FOR 20" X 18" X 11" CONGLOMERATE STONE.  
 FOUND 20" X 16" X 14" STONE WITH 3 VISIBLE NOTCHES ON SE EDGE AND ONE VISIBLE NOTCH ON TOP.  
 SET 3/4" X 30" REBAR WITH 3 1/4" ALUMINUM CAP P.L.S. 6099 AT LOCATION OF STONE, AND SET TIES AS SHOWN BELOW.

## Monument location



## Monument Inscription



3 1/4" ALUMINUM CAP  
 ON 3/4" X 30" REBAR.

Date of Field Work: May 5, 2005

Office Reference: GALLEGOS05.pro

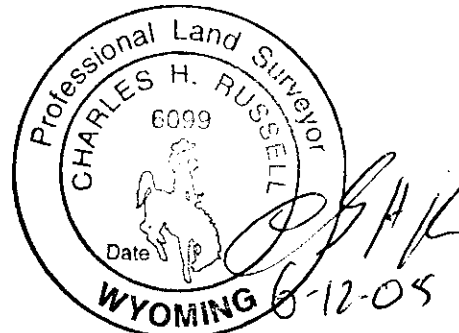
## Cross Index Plat

1	2	3	4	5	6	7	8	9	10	11	12	13	14	15	16	17	18	19	20	21	22	23	24	25	
A																									A
B																									B
C		6		5		4		3		2		1													C
D																									D
E																									E
F																									F
G			7		8		9		10		11		12												G
H																									H
J																									J
K																									K
L			18		17		16		15		14		13												L
M																									M
N																									N
O																									O
P			19		20		21		22		23		24												P
Q																									Q
R																									R
S																									S
T			30		29		28		27		26		25												T
U																									U
V																									V
W																									W
X			31		32		33		34		35		36												X
Y																									Y
Z																									Z
1	2	3	4	5	6	7	8	9	10	11	12	13	14	15	16	17	18	19	20	21	22	23	24	25	

Firm/Agency, Address  
 CHARLES H. RUSSELL P.L.S. 6099  
 AMERICAN WEST LAND SURVEYING CO.  
 29 SOUTH 4TH AVENUE  
 BRIGHTON, CO 80601

Telephone Number:  
 303-659-1532

This corner record was prepared  
 by me or under my direction  
 and supervision.  
 SEAL & SIGNATURE



RECORDED 6/22/2005 AT 12:35 PM REC# 420208 BK# 1888 PG# 1078  
 DEBRA K. LATHROP, CLERK OF LARAMIE COUNTY, WY PAGE 1 OF 1

Corner Name Northwest Corner of Section 9, T 12 N, R 69 W of the 6th P.M.

Cross-Index No.: E-9

County: Laramie Wyoming

SBRPEPLS/PLSW: March 1994; PLSW January 1998